



Box Hill and Back

A Surrey Hills circular hike



Walk 4hrs (11.6km)



Total Ascent 543 m



Highest Point 199 m

In association with



Ordnance
Survey



VESPUCCI[®]
Signature Hikes

Welcome

Thank you for downloading your Vespucci walk.

If you missed the Kit list [here's what to bring](#).



Download this guide on your device

This contains all the handy information: how to get there, points of interest and pubs, taxis etc. Make sure you have plenty of battery!



BOX HILL AND BACK

Tap here to access your digital OS Map

Tap here!

(Make sure you have OS Map App downloaded)

Getting There



Train

This hike is best accessed by train as the walk starts and finishes at Box Hill and Westhumble Station. Trains take under an hour from Victoria and Clapham Junction Station, and run regularly.



By Car

There is a free public car park at Ryka's Café, and we recommend parking here rather than taking your chances at the smaller station car park. Enter the postcode RH5 6BY.

Contents

[Access your Map](#) page 2

[Hike Summary](#) page 4

[Points of interest](#) page 4

[Taking it all in](#) page 6

[Calling it a day](#) page 7

[What's next?](#) page 8

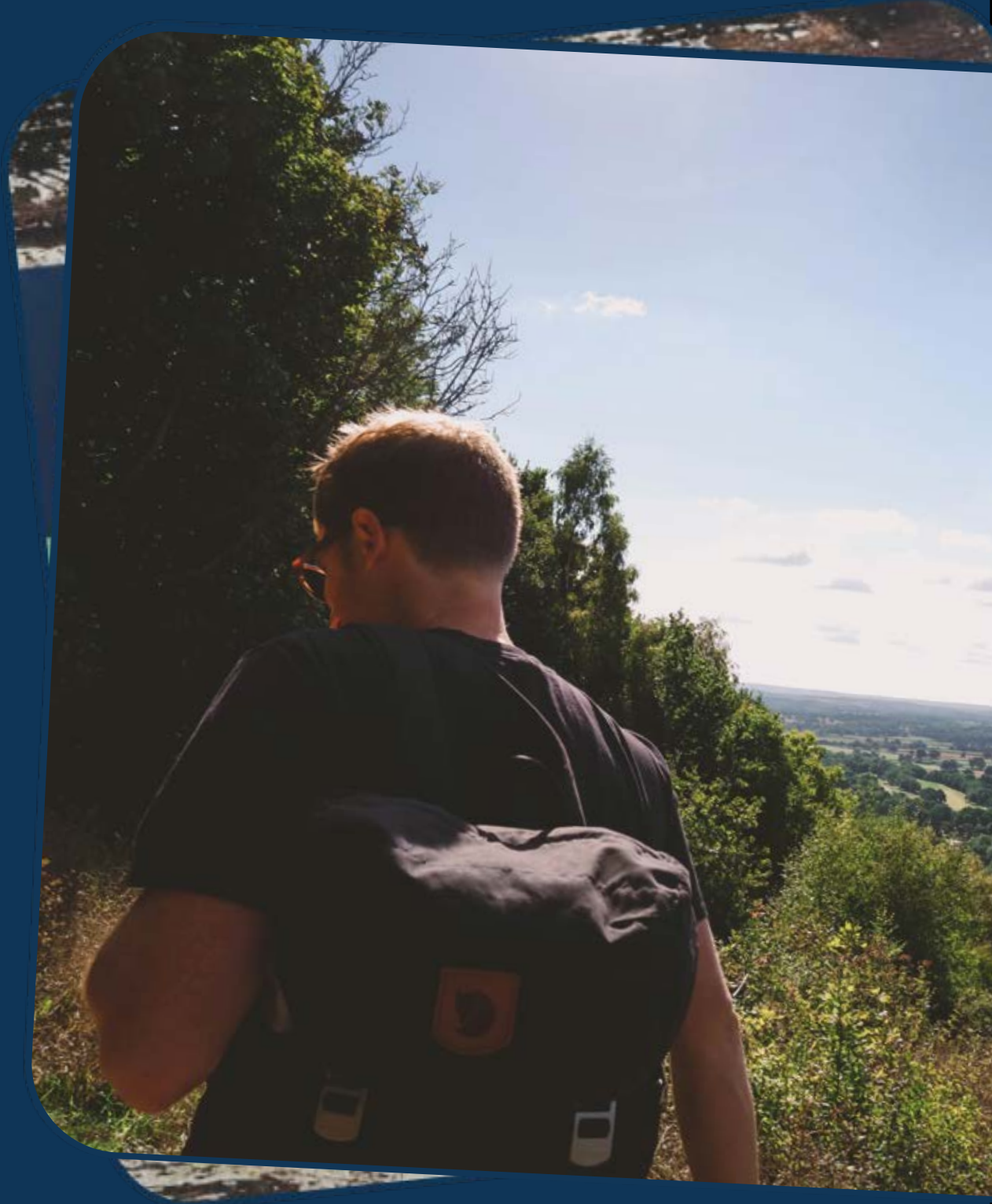


VESPUCCI[®]
SIGNATURE HIKES

Hike Summary

Enjoy spectacular views and woodlands on this walk, before stopping for lunch at the King William IV pub.

Alight at the wonderfully Victorian Box Hill and Westhumble Station and pick up a coffee from Ryka's café. Norbury Park features a lot on this hike, complete with an imposing Georgian Manor whose origins are mentioned in the Domesday Book of 1086. A steady downhill trail leads you home past a beautiful railway bridge over the River Mole.



Points of interest

To learn more about each of these points, [tap here](#) and find the relevant waypoint in the OS map app.



WESTHUMBLE STATION

Norbury Park owner, Thomas Grissell, insisted on the construction of this station as part compensation for the railway cutting across his land.



DENBIES WINE ESTATE

The largest vineyard in England at 265 acres, the estate boasts more than 10 per cent of the plantings in the United Kingdom.



GRAVE OF MAJOR PETER LABELLIERE



An eccentric character who requested to be buried upside down on Box Hill!



BOX HILL

So named from the ancient box woodland found on the steepest chalk slopes overlooking the River Mole.



NORBURY PARK

First appearing in the Domesday Book of 1086, the current house was built in 1774 by William Locke.



THE KING WILLIAM IV

An independent pub with the best view in Surrey! If you want to call it a day here check out “Plan B”.

 [01372 372590](tel:01372372590)



BEAVERBROOK

This luxury hotel was once known as Cherkley Court and was the infamous home of Lord Beaverbrook.

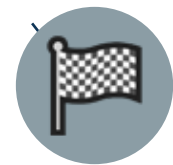


DRUIDS' GROVE

An ancient grove of yew trees home to pre-Christian rituals. Some of the trees are more than 2500 years old.




Plan B
tap here!



FINISH BACK AT THE STATION

Finish back at the station. If you have time to kill, The Stepping Stones pub 5 mins walk away.

 [01306 889932](tel:01306889932)

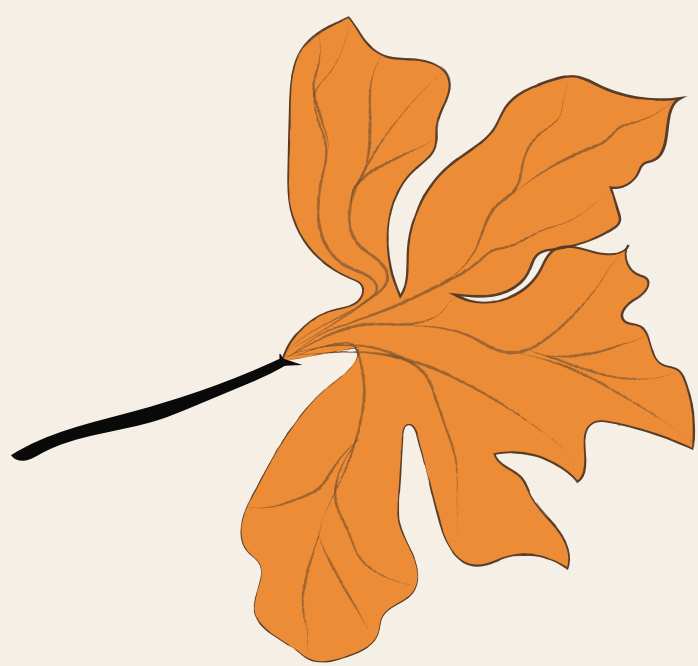


TAKING IT ALL IN

Sometimes, we can get so caught up in reaching our destination that we forget to take in our surroundings. When in fact, some of the best moments on a walk are the ones spent not walking. It is not until you stop and look a little closer, that you truly see the magic of where you are.

Our hikes are not about how fast you walk, but about how much you take in. We share these beautiful trails with an abundance of wildlife and there's always something to marvel at – so long as you take the time to look around.

Here are a few of our favourite bits of flora and fauna to look out for on this hike:

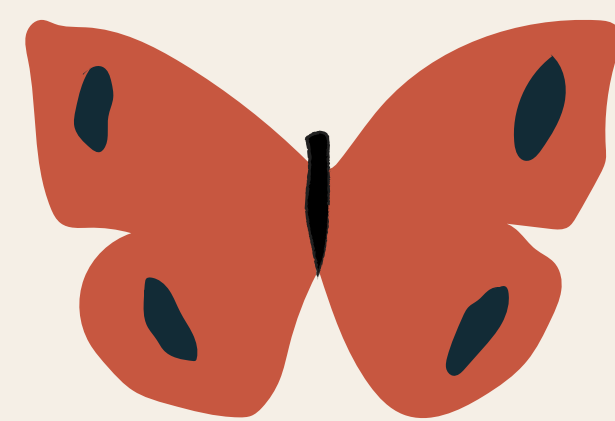


Orchids

17 different orchid species have been recorded on Box Hill

Butterflies

Over 38 species of butterfly call Box Hill home



Yew Trees

Some of the trees are over 2000 years old



Plan B

CALLING IT A DAY?

If you've decided that's quite enough for you, there's absolutely no shame in calling it a day.

Our recommended pick-up spot is from the King William IV pub. A taxi back to the station takes around 5 minutes and will cut your hike short by around an hour (4km). Alternatively there is the 465 bus which takes about 15mins

TAXIS

A-Star Taxis:

[01306 882299](tel:01306882299)

A-2-B Dorking Taxis:

[01306 884411](tel:01306884411)



Thank you

**WE HOPE YOU'VE ENJOYED YOUR WALK.
CURATED BY ROSIE.**





What's next?

We hope you enjoyed your hike as much as we've enjoyed bringing it to you. And we've got plenty more where that came from!

Check out the full range of hikes available to you on:
[your portal](#)

STAY IN TOUCH

We love hearing about your adventures, so please do get in touch with any feedback you have from your walk.

[Leave feedback](#)

